



1/3 1/3 1/3

BUY ANY LEICA PIPE LASER IN MARCH OR APRIL AND ONLY PAY ONE THIRD NOW, WITH ONE THIRD DUE THE NEXT MONTH, AND ONE THIRD DUE THE FOLLOWING MONTH.



The Piper 100 and 200 pipe lasers are designed to fit inside even the smallest pipes. It is the only pipe laser that fits inside a 100mm pipe. The Leica Piper series lasers are built with solid cast aluminium housings, and are loaded with features that will improve productivity and minimise downtime on the jobsite.

The Piper is 100% waterproof with a positive pressure nitrogen seal, and a 2-year warranty. Features include a grade range of +25% to -10%, a wireless multi-function remote control, long battery life of up to 40 hours with an intelligent battery indicator that accurately monitors the remaining battery life and cross-axis compensation that corrects errors in grade when the Piper is not set straight in the pipe.

Leica's patented Alignmaster technology makes second day set-ups a breeze—automatically entering the laser on the target (only available on the Piper 200).

The Leica Piper package includes the piper 100 or 200 pipe laser, carrying case, remote control, target assembly, lithium-ion battery pack, charger and car charger.



2009 is the 25th Anniversary of Global Survey being in business. We started off in 1984 as Laser Alignment (NZ) Ltd selling lasers and in 2001 merged with Global Survey, adding a complete range of survey products. As the company has grown, we have come to represent many market leading brands such as Leica Geosystems, Mikrofyn lasers, MDL Mining systems, 3B6 Weighing systems, Schonstedt magnetic locators, Trumeter measuring wheels, Laser Technology range finders to name a few.

With the first 25 years behind us, we look forward to the next 25 with excitement about what the future holds.



INSIDE THIS ISSUE



1/3, 1/3, 1/3 payment on Leica Pipe Laser



Schonstedt's underground magnetic locators



Powergrade 2D Grader Control System



SmartFix gaining a competitive advantage



HG Turf works over AMI Stadium



Invest today in Leica GPS 1200+

GLOBAL HIRE
0800 4 LEICA
0800 4 53422

See our new hire rates for Lasers

SCHONSTEDT GA-52CX AND GA-92XTD UNDERGROUND LOCATORS >>

7 YEAR WARRANTY

Schonstedt's underground magnetic locators have been setting the standards for reliability and dependability for over 30 years. They are designed to withstand the rigors of daily on-site usage and a wide range of environmental conditions. Two models are available. The 'traditional' stalk style GA-52Cx locator or the new 'holster' style GA-92XTd.

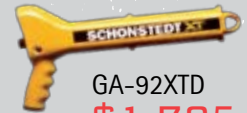
Schonstedt Locators accurately detect and locate ferrous objects up to 5m below the surface. These objects can be survey marks or underground services. The two models provide audio detection signals that peak in frequency when the locators tip is held directly over the target. The GA-92XTd comes with a hip holster so that your hands are free to carry other items.

FEATURES INCLUDE:

- Lightweight, easy-to-use-design
- Operates in both retracted and extended modes (GA-92XTd only)
- Fingertip control of volume and sensitivity
- Battery indicator
- Digital readout and expanding bar displays signal strength



GA-52CX
\$1,595+GST
SAVE \$200



GA-92XTD
\$1,795+GST
SAVE \$200

Offer available until April 30th 2009

POWERGRADE 2D GRADER CONTROL SYSTEM >>



Leica PowerGrade will revolutionise your construction processes. It not only boosts your productivity and performance, it also offers unmatched flexibility and upgrade ability to 3D.

Leica PowerGrade can dramatically reduce fuel and operating expenses and increase machine utilisation,

productivity and optimise material usage on any earthmoving and fine-grading contracts. It can be used stand alone for cross-slope control or with a wide range of lasers and sonic sensors. Combine that with industry leading user-friendly use and you've got a winning combination. The key to the Leica PowerGrade system lies in our unique PowerSnap concept – a single docking station allowing easy and quick removal or exchange of panels. Simply swap the 2D with the 3D panel or even transfer the panels between machines.

BENEFITS INCLUDE:

• Increased productivity

Maximises your machine utilisation and return-on-investment from day one, by getting right to grade the first time.

• Increased flexibility

Unique Snap-on and Snap-off capability – no cables left flogging around makes for easy removal of key components for overnight security.

Fully scalable from basic 2D entry level system to full 3D capability. Laser, slope, sonic, GPS and total station control options.

Simple upgrade steps with options for purchase, lease or rental.

• Reduced costs

Significantly reduces your fuel and operating costs through higher productivity.

Reduce labour costs by reducing or eliminating grade checking.

• Unrivalled flexibility

Why be forced into buying a complete dozer or grader system for each machine in your fleet? Leica is unique. Snap-on and Snap-off capability allows you to change from one configuration to another as the job demands. For example: Running in 3D GPS mode today and 2D laser mode tomorrow? – Just switch the operating modes. Using the grader one day and your dozer the next? – Just transfer the control panel to the other machine.

• Automatic control of slope and elevation

The Leica PowerGrade system provides automatic control of both slope and elevation. Adding a Sonic or laser sensor increases accuracy and productivity even more.

The system is ideal for contractors who want to further increase their machine productivity working with easy-to-use, high accuracy grade control.

• More advantages of Leica PowerGrade

- Contact-free, sealed control/display panel – no more connectors or cables. Fully graphic colour display guiding the operator.
- Easy installation typically within one day minimising machine downtime.
- Automatic side-shift control for motorgraders with our patented Tri-Sonic technology when working with curbs, string lines or 3D design models!
- Fully waterproof system – designed for the harshest construction environments.

SMARTFIX GAINING A COMPETITIVE ADVANTAGE >>

Global Survey has been supplying GPS and Glonass position corrections via the Internet for over 12 months through the SmartFIX service (www.smartfix.co.nz).

The service provides real time GPS and Glonass corrections to major metropolitan and peri-urban areas in New Zealand.

Users only need a rover system. Existing bases can have a conversion kit so they can be quickly converted between a base or a rover. No base station saves on field time and equipment making survey teams more mobile, and productive as they can quickly relocate to a new site, or efficiently collect small amount of data.

Feed back from our users have included such comments as:

"The accuracy achieved from the Network RTK has impressed me. At least 90% of my measurements are within 20mm", and "Since adopting the SmartFIX service it has become an integral part of our field operations. The SmartFIX service of getting RTK corrections via the Internet is simple to use and has significantly increased the production of our field teams."

From the proven cost savings and feedback like this, it is easy to see how subscribers have turned this service into their competitive advantage.

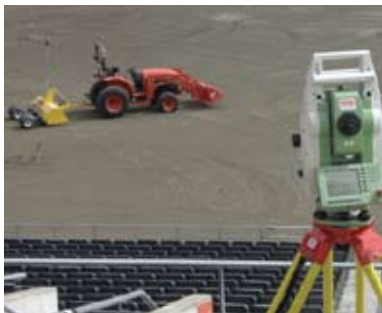
Users of other manufacturers systems that can receive a RTCM correction can also subscribe to the SmartFIX service.

Existing system Leica 1200 users only need to purchase a cell phone modem and a data contract to enable them to connect to the data service either on their Total Stations (via a SmartStation) or on their GPS/GNSS rover.

To get the competitive advantage before the system is the standard practice, call Global Survey on 0800 452 737.



AMI STADIUM CANTERBURY'S SECRET WEAPON >>



The next time you're watching the Crusaders or the Canterbury Rugby Team and you notice how great the playing surface is looking, you have HG Turf and Leica PowerGrade 3D to thank.

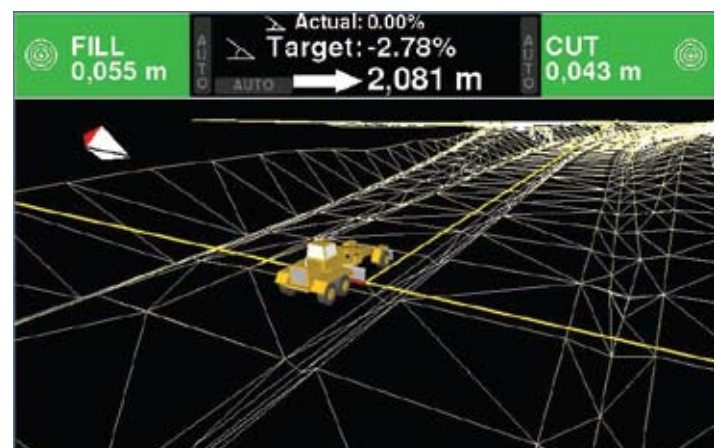
At the end of the 2008 rugby season, HG Turf started work on upgrading the playing surface at AMI stadium. The work included excavation and striping of the old surface, laying new drainage and construction of a brand new 'state of the art' playing surface on the park. To do this, HG used a drag scoop fitted with a Leica PowerGrade 3D system using a Leica 'robotic' total station to automatically control HG's drag-scoop allowing them to grade to within a few millimetres of design.

Ray Copeland, General Manager of Global Survey says,

"The feedback from the operators was fantastic. Not having used this type of technology before they picked it up immediately and gave us very good reports about how much more accurate and how much faster they were. They were very impressed with the final result and savings in time and material."

PowerGrade 3D can be used with GPS or robotic total station or both. Combined with Leica's unique 'mast-slope compensation' PowerGrade 3D is not only the most accurate system on the market, it is also the most flexible being able to be used with all major manufacturers GPS and survey technology and other manufacturers hydraulic systems. The system can be mounted on a broad range of machinery such as graders, scrapers, dozers and scoops, automatically controlling the machines hydraulics or providing operator guidance.

Contact one of our specialists to find out more about PowerGrade 3D or the upgradable PowerGrade 2D systems.



0800 4 LEICA [0800 453 422]

LEICA GPS1200+ >>

NEW
PRODUCT

THE ONLY TRULY FUTURE-PROOFED GNSS RECEIVER

When it says "future proof GNSS", it means maximum productivity and reliability. More satellites, more GNSS signals. Today and tomorrow! With the NEW 120 channel Leica GPS1200+ you can be certain that you're ready for the future. Invest today in future proof GNSS technology and be sure that your equipment can track all satellites today and tomorrow. GPS1200+ is the only real future proof GNSS System. Whether you use your GPS1200+ for Static or RTK, the performance increase is measurable.

- **Future proof**

Leica is the only manufacturer that can offer a compliance upgrade path to four satellite systems, which is based on publicly available system definitions. GPS1200+ supports GPS, GLONASS, Galileo and Compass and existing GPS1200 can be easily upgraded.



- **GPS modernisation**

GPS1200+ supports L5 – the new third GPS frequency. Through higher power emission GPS L5 offers easy and faster signal acquisition and tracking with better multipath rejection performance. GPS1200+ will track this today.



- **Glonass modernisation**

GPS1200+ supports the current Russian Glonass system and is also future-proofed for modernisation plans to the Glonass constellation.



- **Galileo**

Galileo will add another 30 satellites to the GPS and GLONASS constellation. The GPS1200+ supports all 4 Galileo signals including AltBOC and is the only system available that supports all signals based on the Galileo published standards guaranteeing top performance.



- **Compass**

The GPS1200+ is able to track and use the Chinese GNSS system, Compass. With a usable deployment by 2010, this system will also add another 30 satellites, which will improve the reliability of the results and productivity of the user.

- **GPS1200+ series**

Built to the toughest military specifications, GPS1200+ provides all the flexibility, power and performance needed for every type of GNSS application, irrespective of the site conditions with guaranteed future-proofing to ensure your investment keeps up to date with the latest developments in technology. Contact us, and ask about Leica's special introductory pricing.



For existing GPS1200 users, options to upgrade your GPS1200 to the GPS1200+ are available. Get the increased performance benefits of this new and future technology today. Please call us to discuss.

SALE ITEMS ON THE WEB >>

Remember, if you are looking for that next piece of equipment, check out the SALES ITEMS on our website at www.globalsurvey.co.nz. These products include end-of-lines, ex-demo and trade-ins at heavily reduced prices.

**GLOBAL
HIRE**
0800 4 LEICA
0800 4 53422

Laser and Survey Equipment – Hire Pricing Schedule

SURVEYING EQUIPMENT				CONSTRUCTION LASERS / MACHINE CONTROL			
TOTAL STATION / LEVEL	DAILY FROM	WEEKLY FROM	MONTHLY FROM	ROTATING LASERS	DAILY FROM	WEEKLY FROM	MONTHLY FROM
Reflectorless	\$150	\$600	\$2200	Self-levelling Lasers	\$50	\$200	\$600
Robotic	\$300	\$1200	\$4500	GRADE LASERS			
Digital Level	\$150	\$600	\$2200	Single Grade Lasers	\$70	\$280	\$750
GPS				Dual Grade Lasers	\$90	\$330	\$850
RTK (cm)	\$500	\$2000	POA	PIPE LASERS			
DGPS (sub m)	\$150	\$650	\$2100	Pipe Laying Lasers	\$70	\$300	\$900
LASER RANGEFINDERS				MACHINE CONTROL			
DISTO	\$50	\$180	–	3D Machine Control Systems	–	POA	–
Rangefinders	\$100	\$400	\$1200	Laser Machine Control Sensors	\$50	\$200	\$550
HDS Laser Scanner	POA	POA	POA				

LONG-TERM HIRE RATES AVAILABLE ON REQUEST. ALL PRICES EXCLUDE GST AND FREIGHT.

www.globalsurvey.co.nz